

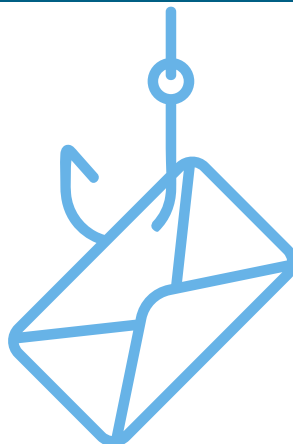
# The Broadband Buzz

News from your local provider to keep you connected.

April 2024

## Avoid Phishing Scams Online

Phishing is the most common tactic employed by hackers, as it requires the least amount of effort and generally preys on the less cyber-aware. It's also the most common way for you to be exposed to ransomware. Phishing attacks can take many forms, but they all share a common goal – getting you to share sensitive information such as login credentials, credit card information, or bank account details.



Here are some different types of phishing attacks to watch out for:

**Phishing:** In this type of attack, hackers impersonate a real company that you know to obtain your login credentials. You may receive an email asking you to verify your account details with a link that takes you to an imposter login screen that delivers your information directly to the attackers.

**Spear Phishing:** Spear phishing is a more sophisticated phishing attack that includes customized information that makes the attacker seem like a legitimate source. They may use your name and phone number and refer to known companies in the e-mail to trick you into thinking they have a connection to you, making you more likely to click a link or attachment that they provide.

**Shared Document Phishing:** You may receive an email that appears to come from file-sharing sites like Dropbox or Google Drive alerting you that a document has been shared with you. The link provided in these e-mails will take you to a fake login page that mimics the real login page and will steal your account credentials.



Alissa and Jacqui attended the Bluff Country Collaborative (BCC) Career Fair and Hiring Event on March 6th in La Crescent. They spent the day chatting with potential job seekers about the many different career paths within the telecom industry! We are growing quickly and

adding to our team-- if you or someone you know would be a good fit, please apply! You can view our current job openings on our website at [www.mibroadband.com/careers](http://www.mibroadband.com/careers)

## Closed Captioning Concerns

If you have Closed Captioning concerns on GoTo>TV service, such as unintelligible or missing captions, please contact us.

To report a concern:  
Call 507-886-6422 or email [support@mibroadband.com](mailto:support@mibroadband.com)

## Welcome Ali!



Meet Ali! Ali joined our team in February as an Executive Partner. She was born and raised in SE Minnesota near Rushford. Ali is beyond thrilled to bring 17 years of experience in finance, executive support, and management to the SGC and MiBB team and to be a part of our local communities. In her spare time, you'll find her with family chasing her two-year old son. Ali loves the summer and fall months, traveling, and spending time with friends and family.

Follow us on  
**Facebook & TikTok!**  
**@mibroadband**



**Your Local Technology Experts**

507-886-6422 - [support@mibroadband.com](mailto:support@mibroadband.com) - [www.mibroadband.com](http://www.mibroadband.com)

*This institution is an equal opportunity provider and employer*

# Streaming Video 101

**STREAM GOTO>TV TODAY!**

## What is streaming video?

Streaming video refers to entertainment delivered via the internet rather than a traditional cable TV connection.



## What equipment do I need?

To enjoy streaming video, you need:

- Fast and reliable internet.
- A streaming device such as an Amazon Firestick, Roku, Apple TV or Smart TV.
- A subscription to a streaming service such as GoTo>TV, Netflix, Disney Plus, HBO Max, Prime Video, etc.

## How do I suscribe?

Subscribing to new streaming channels and services is simple. Once you have your streaming capable device connected to the internet and have set up an account, you can then simply navigate to the app menu in your device and select the desired service or channel to preview. Information will be included such as a description of the service and monthly cost. To subscribe, you select the desired service and agree to subscribe. We are always here to help if you need any assistance!



# HAPPY WORKIVERSARY!



**Dustin Myers**  
4 years in March



**Cory Tammel**  
2 years in March



**Carter Hicks**  
1 year in April

## Don't forget that we have a location in Preston!

We have an office located at 702 Industrial Drive across the street from the Poet Plant in Preston. You can stop in to pay your bill, drop off payment, make changes to your service or ask any questions.

Our office hours are Monday-Friday from 8:00am-5:00pm at all locations.

